

# Photo ExpressViewer® Software Manual



© 2021-2022, Ichikawa Soft Laboratory Co.,Ltd. All rights reserved.

# Contents

<b>1. Startup .....</b>	<b>1</b>
1.1. Installation and Execution .....	1
1.2. Trial and Registration of Product Key .....	1
1.2.1. Beginning Trial .....	1
1.2.2. How to Register Product Key .....	2
1.2.3. Product Key Registration Cancellation .....	3
1.2.4. Inquiries Regarding Product Key Registration .....	3
<b>2. Operation flow and screen configuration.....</b>	<b>5</b>
2.1. Operation flow.....	5
2.2. Names and basic functions of each part of the screen .....	6
2.3. Menu bar .....	6
2.3.1. File.....	6
2.3.2. Edit .....	7
2.3.3. View.....	7
2.3.4. Image .....	8
2.3.5. Settings .....	8
2.3.6. Help .....	9
2.4. Toolbar .....	10
<b>3. Open the image .....</b>	<b>11</b>
3.1. Open file .....	11
3.2. Open folder .....	11
3.3. Import from media.....	11
3.3.1. Basic settings .....	12
3.3.2. Sort.....	13
3.3.3. Rename.....	13
<b>4. Display image .....</b>	<b>14</b>
4.1. Thumbnail mode .....	14
4.2. Combination mode.....	14
4.3. Preview mode .....	15
4.4. Multi preview .....	15
4.5. Full screen preview .....	15
4.6. Display image information .....	16
4.7. Displaying files with the same name .....	16
4.8. About RAW data that cannot be previewed.....	17
<b>5. Classify images .....</b>	<b>18</b>
5.1. Set mark / rating .....	18
5.1.1. Set marks .....	18
5.2. Filtering images .....	19
5.2.1. Search .....	20
5.2.2. Filter .....	20

<b>6. Sort the images .....</b>	<b>22</b>
6.1. Sorting by image information .....	22
6.2. Sorting by dragging.....	23
<b>7. Organize images.....</b>	<b>24</b>
7.1. Copy/Move/Delete .....	24
7.2. Rename .....	24
7.2.1. Batch rename .....	25
7.3. Files to be copied / moved / deleted / renamed .....	26
7.4. Export metadata .....	27
7.4.1. XMP format .....	27
7.4.2. SILKYPIX development parameters file.....	28
7.5. Open with another application .....	28
<b>8. Other useful functions.....</b>	<b>31</b>
8.1. IPTC Information taste.....	31
8.2. Register / Restore window positions .....	32
8.3. Reset the window layout to the initial state.....	32
8.4. Collapse / Expand controls .....	32
<b>9. Settings .....</b>	<b>33</b>
9.1. Display settings.....	33
9.2. Function settings.....	35
9.3. Shortcut keys settings.....	36
9.4. Metadata export settings .....	37
9.5. Customize toolbar .....	38
9.6. Select skin .....	38
<b>10. User support.....</b>	<b>39</b>
10.1. Inquiries about merchandise.....	39
10.1.1. How to make inquiries .....	39
10.1.2. How to check serial number.....	40
<b>11. License Agreement .....</b>	<b>41</b>

- Please acknowledge that the contents and price of the specific software and manual of this product will change without notice.
- The specifications and the screen shots that have been described in this manual might be different from the product version.
- This manual has been copyrighted. It is prohibited to reproduce, reprint any of the materials and product without obtaining permission from Ichikawa Soft Laboratory Co., Ltd.
- The manufacturers, the cameras, and the software names that have been described in this manual are the trademarks or registered trademarks of each company.
- SILKYPIX®; It is a registered trademark of Ichikawa Soft Laboratory Co., Ltd.
- The re-distribution module that Microsoft Corporation owns the copyright is included.

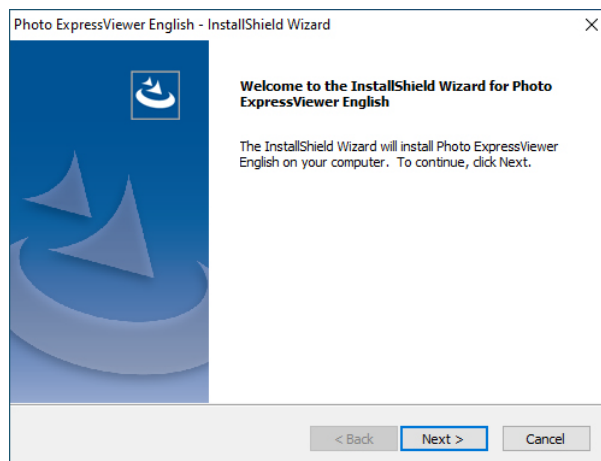
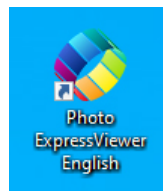
## 1. Startup

### 1.1. Installation and Execution

When you execute the downloaded set-up program, installation of "Photo ExpressViewer" starts.

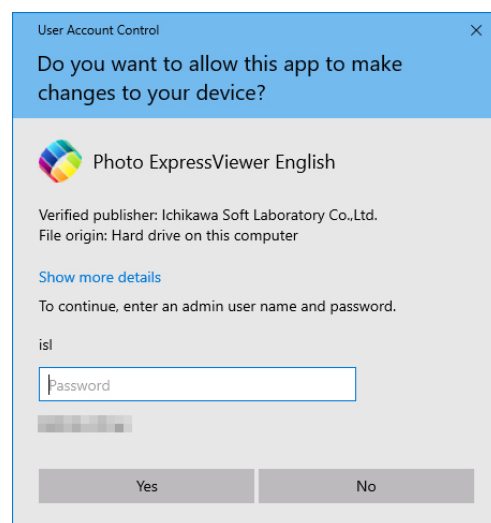
"Photo ExpressViewer" icon is created on the desktop after the installation is complete.

Double-click the above icon on your desktop to execute "Photo ExpressViewer".



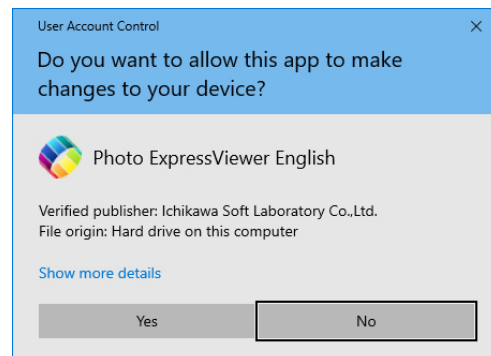
When installing or running "Photo ExpressViewer" for the first time, process as the administrator in order to record administrator information on the PC you are using. Your admin permissions become necessary to continue. Please continue processing at the "User Account Control" dialog.

If your account is a "Standard user", please enter the password of the administrator account and then click [Yes] button.



If your account is an "Administrator", please click [Yes] button.

During the first time start-up process, Photo ExpressViewer operates as an administrator. After the completion of this process, Photo ExpressViewer operates as a standard user.



### 1.2. Trial and Registration of Product Key

#### 1.2.1. Beginning Trial

You can test the full function of Photo ExpressViewer and check the development quality before purchasing the software during the trial period.

When starting-up Photo ExpressViewer at first time, the "Registration" dialog is displayed. Click [Begin trial] to start trial. You can use Photo ExpressViewer during only trial period without the license. Please purchase the license to continue to use Photo ExpressViewer.

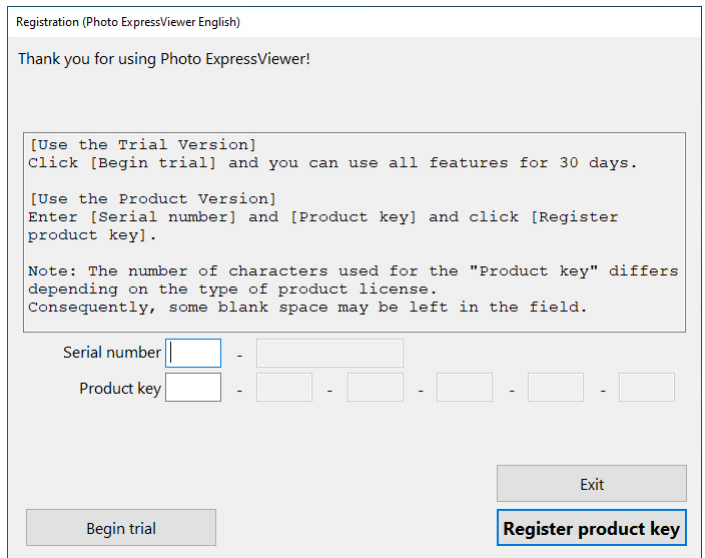
When installing or running "Photo ExpressViewer" for the first time, process as the administrator in order to record

administer information on the PC you are using.

If your account is a "Standard user", please enter the password of the administrator account and then click [Yes] button.

If your account is "Administrator", please click [Yes] button.

Processing is performed as the administrator the first time the program is run, but after this process is complete, it runs as a standard user.



The screenshot shows the 'Registration (Photo ExpressViewer English)' dialog box. It has a title bar and a main area with text and input fields. The text says: 'Thank you for using Photo ExpressViewer!', '[Use the Trial Version] Click [Begin trial] and you can use all features for 30 days.', '[Use the Product Version] Enter [Serial number] and [Product key] and click [Register product key].', and a note: 'Note: The number of characters used for the "Product key" differs depending on the type of product license. Consequently, some blank space may be left in the field.' There are two input fields: 'Serial number' and 'Product key'. The 'Product key' field is divided into six segments by hyphens. At the bottom, there are three buttons: 'Begin trial', 'Exit', and 'Register product key' (which is highlighted with a blue border).

### 1.2.2. How to Register Product Key

When you register the product key on your PC once, you will be able to fully use "Photo ExpressViewer".

You need to be connected to the server via the internet to register your product key. You can automatically register your product key by connecting to the server via the Internet.

The number of PCs that can be registered with one product key differs depending on the type of product key.

Furthermore, if you have to reregister due to some kind of damage, you can reregister as is if it is on the same PC.

After performing product key registration on the PC you use, if you change the PC you use this software on, such as when buying a new PC, you can transfer the license to the other PC by performing "Clear Product key registration" from the registered PC.

One product key can be registered on up to two computers. Please purchase additional licenses if you will use this on three or more computers.

Please enter your "Serial Number" and "Product Key" and then click [Register product key] button on the "Registration" dialog.

Your "Product Key" and "Serial Number" are sent to our server via Internet for a registration. Please confirm your network connection during the registration. If the registration is not completed by some troubles or the network is disconnected during the registration, you cannot use Photo ExpressViewer until the registration is completed.

(Please understand that you are responsible for any charges for the Internet connection during the registration.)

After completing the registration, you do not need to enter your product key in next execution.

\* Internet connection is required only for online registration. You do not need Internet connection for operation of Photo ExpressViewer.

#### [Error during online registration]

Sometimes one may face an error during online registration in spite of an Internet connection working correctly.

Many of the problems may be caused by your network, security software or proxy/firewall settings. We may not be able to support you with your security software or network setting. It is your responsibility to ensure that Photo ExpressViewer can connect to our server via Internet.

[When reregistering is required]

If product key registration information has been lost because there was some problem with the PC that the product key was registered on and you had to reinstalled your OS, it will be necessary to register the product key again.

If reregistering to the same PC, please re-register using the same procedures for new registrations. A product key and a serial number are required for reregistering. In principle, we will not reissue your license, so please take care so that it will not be lost.

[If you want to transfer to another PC]

Transfers to other PCs can be done automatically by performing "Clear Product key registration".

### **1.2.3. Product Key Registration Cancellation**

These are the procedures for automatic performing a transfer to the PC on which you use this software, such as with the purchase of a PC. The transfer of licenses can be performed automatically over the Internet.

You will perform "Clear Product key registration" on the PC on which you performed product key registration, and then perform "Product Key Registration" on another (one) PC to which you wish to transfer.

One important matter to note is that you will not be able to reregister the same product key to a PC on which you have performed "Clear Product key registration". Please be aware that this method cannot be used to alternate between two PCs.

[Procedures for Product Key Registration Cancellation]

- (1) Start the software on the PC on which you will perform registration cancellation.
- (2) Select "Clear Product key registration" from the "Help" menu.

If the "Clear Product key registration" menu item is not available, you cannot perform "Clear Product key registration" on your PC.

The "User Account Control" dialog will appear and ask if you will continue. Continue by using one of the following methods.

If your account is for a standard user (if not an administrator), enter the administrator's account password and click on the [Yes] button.

If your account is as the administrator, click [Yes]. This process requires "Administrator Authority".

- (3) Click the "OK" button when the "Clear Product key registration" dialog appears.
- (4) "Registration is initialized." Click the "OK" button when this message appears.
- (5) Photo ExpressViewer will end. This completes the procedures through "Clear Product key registration".
- (6) Start Photo ExpressViewer on the new PC on which you will use the software and perform product key registration.

### **1.2.4. Inquiries Regarding Product Key Registration**

This software offers a method so that customers can automatically perform product key registration, reregistering, and transfers to other PCs over the Internet on their own. Before contacting our company, we ask that you confirm whether or not you can solve your problem by utilizing these methods.

A method for solving your problem may be listed in the information on our company's web page

(<https://www.isl.co.jp/en/product/pexv/>).

Please utilize user support's "FAQ (Frequently Asked Questions)".

If you still cannot solve the problem on your own, please e-mail ([support@isl.co.jp](mailto:support@isl.co.jp)) our company's support desk.

When doing so, please give as many details of the problem as possible and check that you have not left out any required items.

[Required items to include when e-mailing]

Software name: "Photo ExpressViewer"

Software serial number

Your name

Phone number

Return e-mail address

Description of the problem (as detailed as possible)

## 2. Operation flow and screen configuration

### 2.1. Operation flow

Photo ExpressViewer is image viewer software that displays preview images embedded in RAW data in addition to JPEG and TIFF images, and can easily classify and organize files by adding color marks and ratings.

To organize your images after opening the file, follow these steps:

#### A. Open the image



Select a file folder to open.

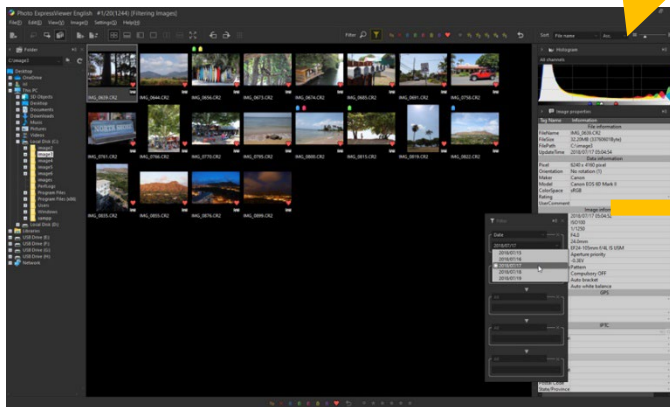
You can also open an image from media such as an SD card.

#### B. Display the image



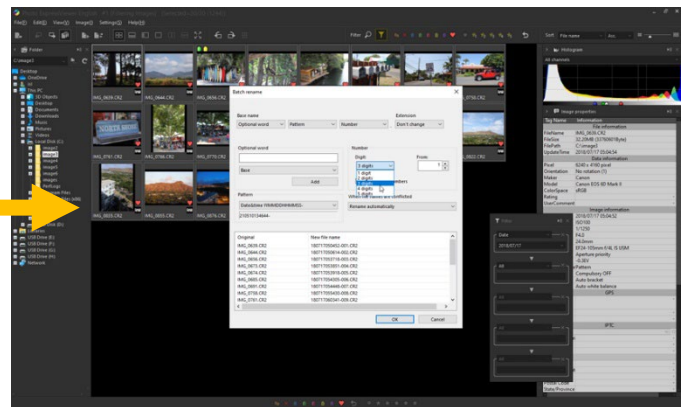
Display the opened image in various display modes, and add marks and ratings to organize it as required.

#### C. Classify and sort images



You can classify the images by the added marks and ratings, and narrow down and sort the images from the image information.

#### D. Organize images



Move the narrowed down images in a batch or rename them to organize the files.

By exporting metadata in XMP format, you can take over color labels, ratings, etc., with other image editing software.

The above is just an example. You can freely use the lavish features of Photo ExpressViewer according to your needs, such as when you want to import only from media or when you want to use it only for batch renaming of image files.



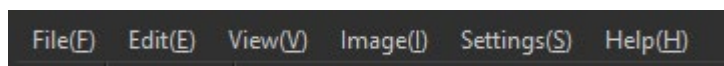
## 2.2. Names and basic functions of each part of the screen



	Name	Overview
1	Menu bar	Execute the function from the menu.
2	Toolbar	Click the icon to perform the function.
3	Folder	Display the folders in a hierarchical structure. Select the folder where the images are stored.
4	Histogram	Display the brightness distribution of the selected image as a graph.
5	Image properties	Display the image information, such as EXIF information and IPTC information of the selected image.
6	Status bar	Click the icon to set the mark and rating.
7	Preview/Thumbnail	Preview or thumbnail of the image.

## 2.3. Menu bar

Select a function to execute in each menu.



### 2.3.1. File

Menu items related to files are found here.

Name	Overview
Open file	Open RAW data and JPEG/TIFF images for display as single files.
Close	Close all images.

Import from media	Copy images from removable media such as SD cards.
Copy marked images	Copy images that were marked for copying.
Move marked images	Move images that were marked for moving.
Delete marked images	Delete images that were marked for deletion.
Copy selected images	Copy selected images.
Move selected images	Move selected images.
Delete selected images	Delete selected images.
Batch rename	Rename selected images as a batch.
Close selected images	Close selected images.
Exit	Close Photo ExpressViewer.
Open with another application	Open the selected images with another application registered in advance.
Folder access history	Display history of folders that have been edited.

### 2.3.2. Edit

Items related to operations to change the selection status of images, etc. are found here.

Name	Overview
Select all images	Select all open images.
Select	Select all images set as marked.
Invert selection	Invert status of selected images.
Rotate right	Rotate right selected image.
Rotate left	Rotate left selected image.

### 2.3.3. View

Items related to Main window and Sub-controls are found here.

Name	Overview
Thumbnail mode	Switch to thumbnail mode.
Combination mode (tile horizontally)	Switch to the horizontal combination mode.
Combination mode (tile vertically)	Switch to the vertical arrangement combination mode.
Preview mode	Switch to preview mode.
Multi preview (tile vertically)	Switch to the vertical multi preview mode.
Multi preview (tile horizontally)	Switch to the horizontal multi preview mode.
Previous image	Move selected image to previous image.
Next image	Move selected image to next image.
Display magnification	Switch the image displayed in the preview to the same size display or the whole display.

Display grid	Show grid lines on the preview.
Display toolbar	Turn toolbar display on / off.
Display status bar	Turn status bar display on / off.
Folder	Turn folder display on / off.
Image properties	Turn image properties display on / off.
Histogram	Turn histogram display on / off.
Search	Turn "Search" sub-control display on / off.
Filter	Turn "Filter" sub-control display on / off.

### 2.3.4. Image

Items related to settings such as the mark and rating of selected images are found here.

Name	Overview
Rotate right	Rotate right selected image.
Rotate left	Rotate left selected image.
Set marks	Set marks for multiple selected images at once.
Copy/Move mark	Set Copy/Move mark reservation for the selected image.
Delete mark	Set Delete mark reservation for the selected image.
User mark 1 (Blue mark)	Set User mark 1 (Blue mark) for the selected image.
User mark 2 (Green mark)	Set User mark 2 (Green mark) [green] for the selected image.
User mark 3 (Red mark)	Set User mark 3 (Red mark) for the selected image.
User mark 4 (Yellow mark)	Set User mark 4 (Yellow mark) for the selected image.
User mark 5 (Purple mark)	Set User mark 5 (Purple mark) for the selected image.
Favorite	Set Favorite for the selected image.
Reset all marks	Unmark all selected images.
Clear rating	Cancel the rating of the selected image.
Rating 1	Set Rating 1 for the selected image.
Rating 2	Set Rating 2 for the selected image.
Rating 3	Set Rating 3 for the selected image.
Rating 4	Set Rating 4 for the selected image.
Rating 5	Set Rating 5 for the selected image.
Export metadata	Exports the edited image information of the selected image in XMP format or SILKYPIX development parameters file.

### 2.3.5. Settings

Items related to settings are found here.

Name	Overview
Display settings	Make preview display and thumbnail display settings.
Function settings	Make general settings for Photo ExpressViewer functions and operations.
Shortcut key settings	Set the shortcut keys for the functions.
Metadata export settings	Make exporting metadata settings.
Customize toolbar	Set the order of icons to be displayed on the toolbar and show / hide settings.
Edit IPTC information tastes	Edit the list display of tastes registered as IPTC information tastes.
Register window positions	Register the placement status of the main window and the displayed controls.
Restore window positions	Restore the placement of registered controls.
Delete access history	Clear the history of previously opened folders.
Initialize window positions and display states	Initialize the state of the main window and the displayed controls.
Select skin	Change the size of icons and fonts and the color of controls.

### 2.3.6. Help

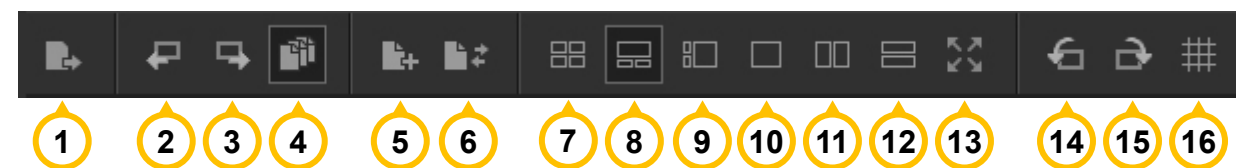
Items related to license registration and software information are summarized.

Name	Overview
Open software manual	Display this manual.
Visit Photo ExpressViewer Website	Display Photo ExpressViewer website.
Registration	Start product key registration.
Clear product key registration	Clear product key registration.
Troubleshooting	<p>This is a function for overcoming troubles by following instructions and operations from our company's support desk.</p> <ul style="list-style-type: none"> <li>■ Initialize user configuration files Initialize Photo ExpressViewer user configuration files.</li> <li>■ Delete temporary files Delete the temporary files created by Photo ExpressViewer for preview, thumbnail display, etc.</li> <li>■ Product key registration test Perform a test to see if it is possible to do an on-line registration of the product key.</li> </ul>
Version information	Display Photo ExpressViewer version information and customer's license information.
System information	<p>Display Photo ExpressViewer settings and PC information.</p> <p>At the time of user support, we may ask you to provide this information.</p>
Check for software updates	Check for any new version of the program.

## 2.4. Toolbar

Click the icon to perform the function.

Icons for functions that are frequently used are located in the toolbar.



	Name	Overview
1	Import from media	Copy images from removable media such as SD cards.
2	Previous image	Move selected image to previous image.
3	Next image	Move selected image to next image.
4	Treat the same base name files as a single image	Switch whether to handle files with the same name with different extensions as a group. Turn it off if you want to display JPEG and RAW with the same name side by side.
5	Copy selected images	Copy selected images.
6	Move selected images	Move selected images.
7	Thumbnail mode	Switch to thumbnail mode.
8	Combination mode (tile horizontally)	Switch to horizontal combination display.
9	Combination mode (tile vertically)	Switch to vertical combination display.
10	Preview mode	Switch to preview mode.
11	Multi preview (tile vertically)	Switch to vertical multi preview display.
12	Multi preview (tile horizontally)	Switch to horizontal multi preview display.
13	Full screen preview	Switch full screen preview on / off.
14	Rotate left	Rotate right selected image.
15	Rotate right	Rotate left selected image.
16	Display grid	Show grid lines on the preview.

Please see "[Filtering images](#)" and "[Sorting by image information](#)" for details about "Filter" and "Sort" on the right side of the toolbar.

### 3. Open the image

Open RAW data and JPEG / TIFF images to sort and organize images in Photo ExpressViewer.

In addition to the method of specifying the image file in file units and the method of specifying in folder units, there is also a method of copying and opening the file from removable media such as an SD card.

#### 3.1. Open file

Select [File]-[Open file...] from the menu. From the "Open file" dialog, select an image file to open.

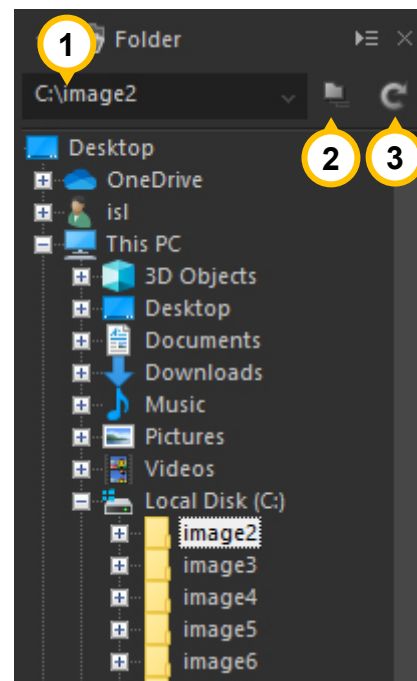
You can also open it by dropping the file from Explorer.

#### 3.2. Open folder

Select the target folder from the folder tree on the left side of the main window.

You can also open it by dropping the folder from Explorer.

	Name	Overview
1	Folder access history	A previously accessed folder can be selected and opened.
2	Select subfolder	You can open the images saved in the folder (subfolder) inside the folder at once.
3	Update	Update the display of the folder tree.



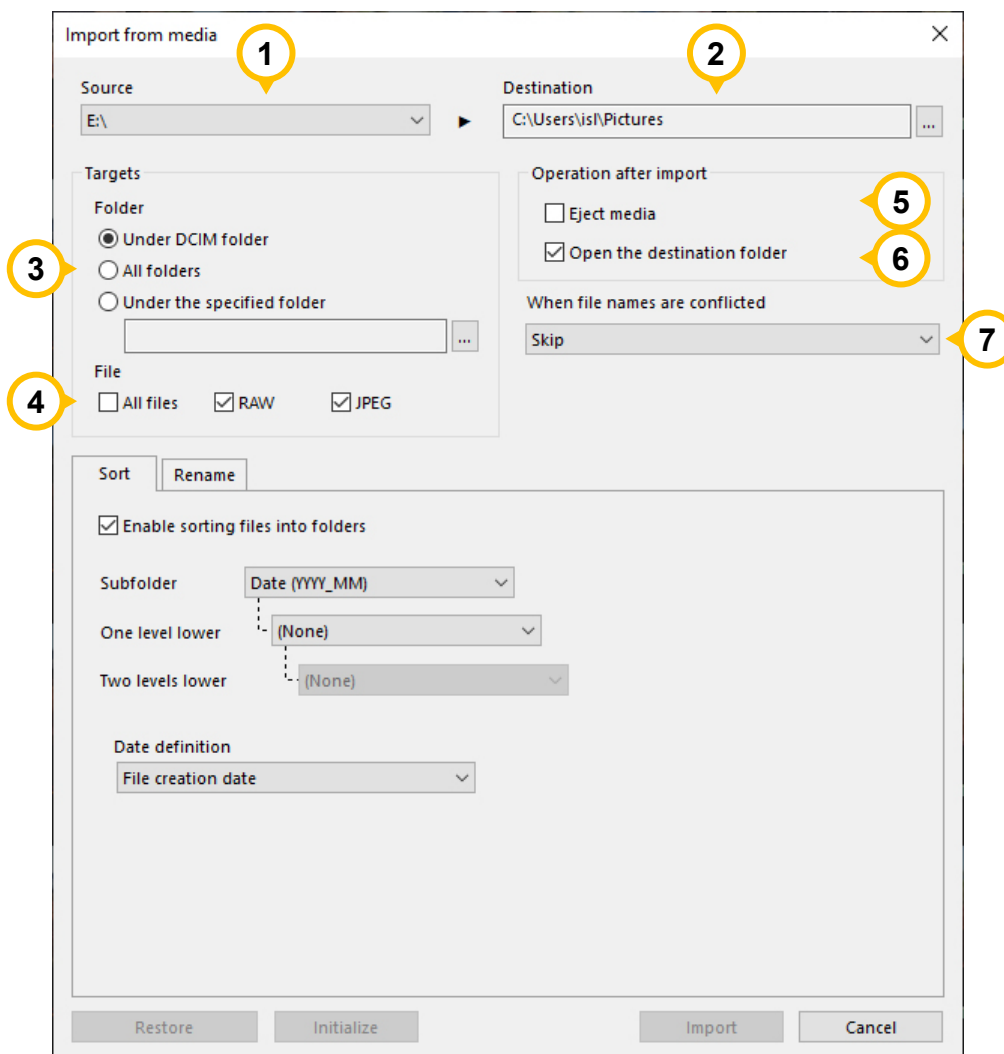
#### 3.3. Import from media

After copying the image file from the SD card or other removable media to the PC, open it.

When Photo ExpressViewer is running and you insert media such as an SD card, the "Import from media" dialog will appear.

If media has already been inserted, select [File]-[Import from media...]. or click the  icon on the toolbar.

After making the following settings, click the [Import] button to copy the file from the source media.



### 3.3.1. Basic settings

	Name	Overview
1	Source	Select the drive in which the source media is inserted. * Only removable disks are displayed.
2	Destination	Specify the copy destination of the file.
3	Folder	Specify the folder to be imported on the import source drive. <ul style="list-style-type: none"> <li>■ Under DCIM folder The target is in the "DCIM " folder of the import source drive. Images taken with a digital camera, etc. are usually recorded in the folder named "DCIM", so select this when you want to target the entire shooting data.</li> <li>■ All folders All folders on the drive specified in the import source are targeted.</li> <li>■ Under the specified folder Target any folder on the import source drive.</li> </ul>
4	File	Specify the file type to be imported. If you select "All", in addition to RAW and JPEG, other types of files (video files, etc.) will also be imported.

5	Eject media	After the import is complete, remove the removable media from the import source.
6	Open the destination folder	After the import is complete, open the import destination folder. If copied to multiple folders, the folder containing the last copied file will be opened.
7	When file names are conflicted	Specify the processing when the same file name exists in the import destination.

### 3.3.2. Sort

When the "Enable sorting files into folders" is checked, the program will create folders for the specified items and sort the corresponding images into them.

You can specify up to three levels of folders.

For example, let's say you are importing SD cards that were taken between 2020/11/1 and 2020/12/31, and you specify Subfolder: "Date (YYYY)", One level lower: "Date (MM)", Two levels lower: "Date (DD)". In this case, folders "11" and "12" will be created under the "2020" folder, and folders "1", "2", and so on will be created under each folder for each date, and the images taken on each date will be copied.

As for the date, the date and time (Shooting date or File creation date) specified in "Date definition" will be applied. If the specified item cannot be retrieved from the target file, a folder named "Unsorted" will be created and the item will be sorted into this folder.

### 3.3.3. Rename

When the "Enable file rename" is checked, the files to be imported will be renamed and copied according to the specified rules.

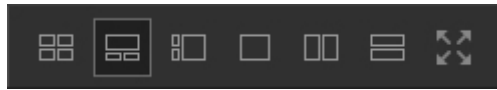
The settings and rules for renaming are the same as for "[Batch rename](#)", so please refer to this.



## 4. Display image

You can display the opened image in a variety of display modes.

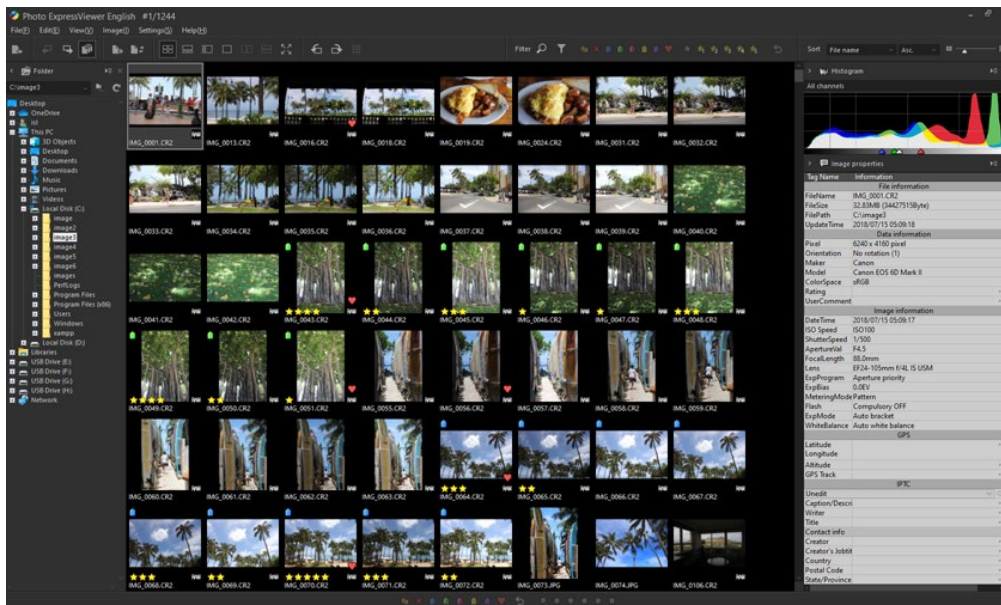
The display mode can be switched from the buttons on the toolbar below or from the [View] menu.



### 4.1. Thumbnail mode

A list of reduced versions of the image is displayed. Double-click the thumbnail to display the preview.

The size of the thumbnail can be changed using the "Image width in thumbnail window" slider on the right side of the toolbar.



### 4.2. Combination mode

The thumbnail display and preview display are displayed at the same time. Thumbnails and previews can be displayed vertically or horizontally.


When you select a thumbnail image, the image is displayed on the preview screen.



### 4.3. Preview mode

Display one image in large size.

You can switch between the same size display and the whole display by double-clicking the image.

You can also display grid lines on the preview by clicking [View]-[Display grid] in the menu or the  icon on the toolbar.

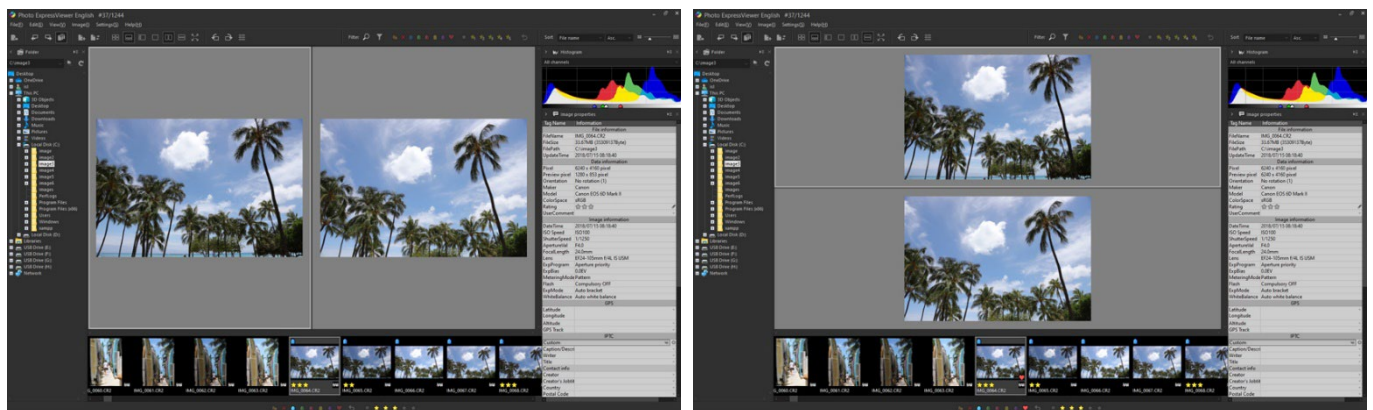


### 4.4. Multi preview

You can display two images vertically or horizontally.

The frame displayed around one of the previews indicates that it is a selected preview.

When you select or switch images, it will be shown in the preview of the selected state.



### 4.5. Full screen preview

Make the preview full screen. In a multi-monitor environment, the preview is displayed on a monitor other than the one with the main window.

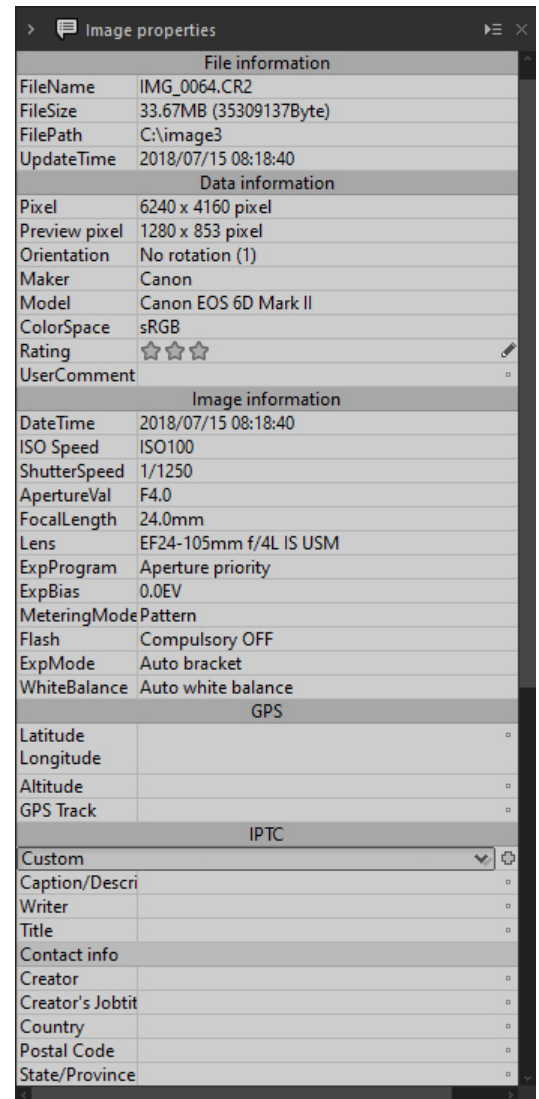
To exit full screen display, click the [x] button at the top right of the screen or press the [Esc] key.

## 4.6. Display image information

The "Image properties" sub-control displays the shooting information such as EXIF and IPTC recorded in the image.

IPTC information can be edited. The edited information can be saved as an IPTC information taste and easily applied to other images.

Please see "[IPTC Information taste](#)" for details on registering IPTC information taste.



## 4.7. Displaying files with the same name

If there are RAW, JPEG, or TIFF files with the same base name but different extensions, the thumbnail image displayed will change depending on whether "Treat the same base name files as a single image" is enabled in the Function settings or on the toolbar.

- **When "Treat the same base name files as a single image" is enabled**

The RAW file is displayed as a representative image.

- **When "Treat the same base name files as a single image" is disabled**

Each file is displayed individually.

For example, if you want to display simultaneously recorded JPEGs and RAWs side by side, disable "Treat the same base name files as a single image".

Please see "[Files to be copied / moved / deleted / renamed](#)" for the behavior of file operations on each image.

## 4.8. About RAW data that cannot be previewed

Photo ExpressViewer uses the preview image contained in the RAW data to display previews and thumbnails. Therefore, depending on the RAW data, the preview and thumbnail may be displayed as follows:

- **"?" Icon is displayed in preview and thumbnail**

Indicates that the preview and thumbnail cannot be displayed because the preview image is not included in the RAW data.



- **"?" Icon is displayed on the thumbnail, but the image is displayed on the preview**

Indicates that the thumbnail cannot be displayed because the preview image is included in the RAW data, but only the high pixel preview image is included.

- **The preview image is displayed blurry (the displayed image becomes smaller when the same size is displayed)**

Since the RAW data contains only a low-pixel preview image (equivalent to a thumbnail) and this image is enlarged and displayed in the preview, the display will be blurry.

The pixel size of the previewed image is shown in the "Preview pixel" section of the Image properties. (This item is not displayed when thumbnails are displayed.)

Uniquemio UncompressedCRA	
Data information	
Pixel	3648 x 2736 pixel
Preview pixel	160 x 120 pixel
Orientation	No rotation (1)

## 5. Classify images

Set marks and ratings on the selected images to sort and organize the opened images.

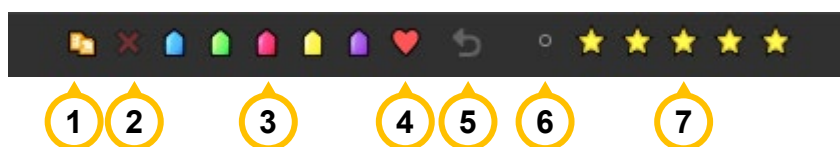
The display is narrowed down based on the set mark / rating and shooting information.

### 5.1. Set mark / rating

Click the icon on the status bar at the bottom of the screen to set the mark / rating for the selected image.

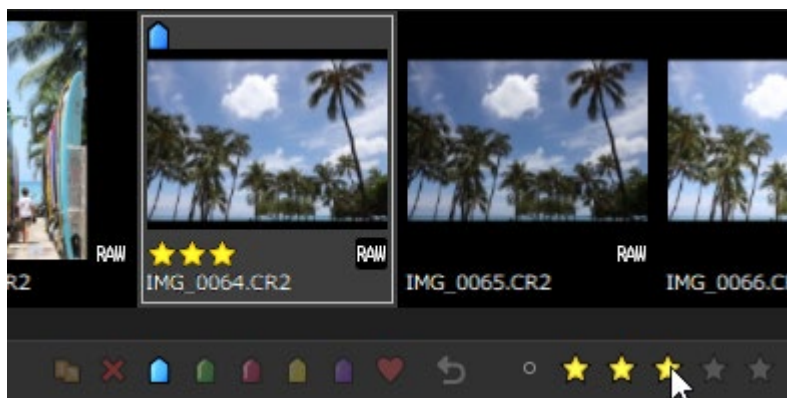
You can also make settings from the [Image] menu, or from the context menu that appears when you right-click on a preview or thumbnail.

You can also set it efficiently by using the preset shortcut keys.



	Name	Shortcut keys	Overview
1	Set/Clear copy/move mark	Num7	Set copy / move reservation.
2	Set/Clear delete mark	Num8	Set a deletion reservation.
3	Set/Clear user mark 1-5	Num1~Num5	Set each mark of user marks 1 to 5.
4	Set/Clear favorite	Num6	Set your favorites.
5	Clear all marks	Num0	Cancel all set marks.
6	Clear rating	Ctrl+0	Cancel the set rating.
7	Set rating 1-5	Ctrl+1~Ctrl+5	Rating 1 to 5 sets.

When the mark / rating is added, the mark and rating set on the thumbnail are displayed.



The marks and ratings on the thumbnails can be hidden in the display settings.

Also, if the width of the thumbnail image is smaller than a certain size, the rating will be hidden.

#### 5.1.1. Set marks

When multiple images are selected, you can set the marks in batches on the "Set marks" dialog.

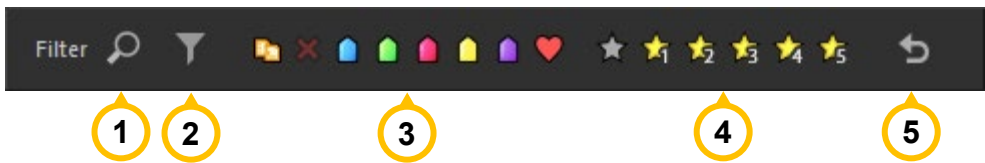


From the [Image] menu or the context menu displayed by right-clicking on a thumbnail, select [Set mark].  
The setting status of each mark for the selected image is displayed.  
If it is set in all images, it will be displayed as a check, and if it is set in some images, it will be displayed as ■.

Check the marks you want to set in a batch, and click [OK].

5.2. Filtering images

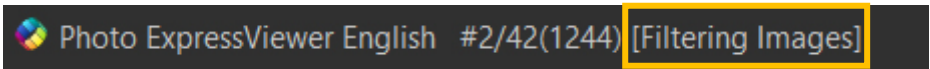
In addition to marks and ratings, the images to be displayed are narrowed down based on image file information and shooting information.  
To filter the images, click "Filter" on the right side of the toolbar.



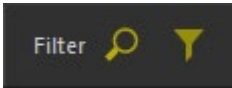
	Name	Overview
1	Search	Specify conditions such as file information and shooting information, and enter arbitrary character strings and numerical values to narrow down the display target. Clicking on the icon will display the "Search" sub-control.
2	Filter	Specify conditions such as file information and shooting information, and select a value to narrow down the display target. Clicking on the icon will display the "Filter" sub-control.
3	Filter images by mark	Click the icon to narrow down the images with the corresponding mark. The icon of the narrowed down mark is displayed brightly. If there is no corresponding mark to be displayed, clicking the icon will not brighten it.
4	Filter images by rating	Click the icon to narrow down the images with each rating. The icon of the rating that has been narrowed down is displayed brightly. If there is no corresponding rating to be displayed, clicking the icon will not brighten it.
5	Clear all filters	Cancels all the conditions displayed in the narrowed down list at once.

When narrowing down the display with multiple marks and ratings, all images (OR search) including any of the marks and ratings will be displayed.

While the image is being filtered, the title bar will display [Filtering images].



Also, while filtering is being done by setting "Search" or "Filter", the corresponding icon will be indicated in yellow.



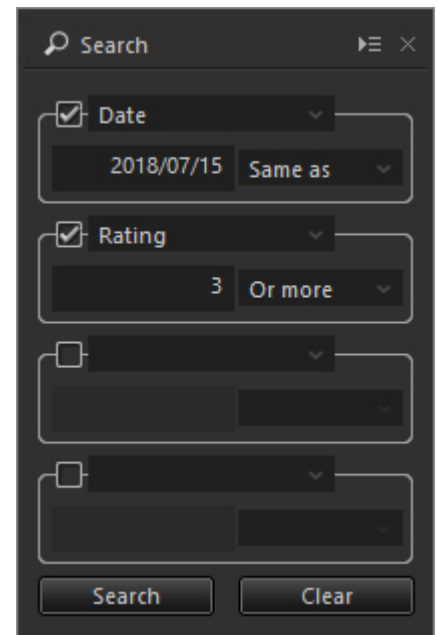
If you switch open folders, the filtered display will be canceled.

### 5.2.1. Search

Specify any character string / numerical value to narrow down the images to be displayed.

The items that can be specified as search conditions are as follows:

- File name
- ISO speed
- F-Number
- Focal length
- User comment
- Date
- Camera model
- Lens
- Shutter speed
- Rating



After checking, select the item to search, enter the character string, numerical value, date, and set the conditions.

Click the [Search] button to filter the images. To remove the filtering, click the [Clear] button.

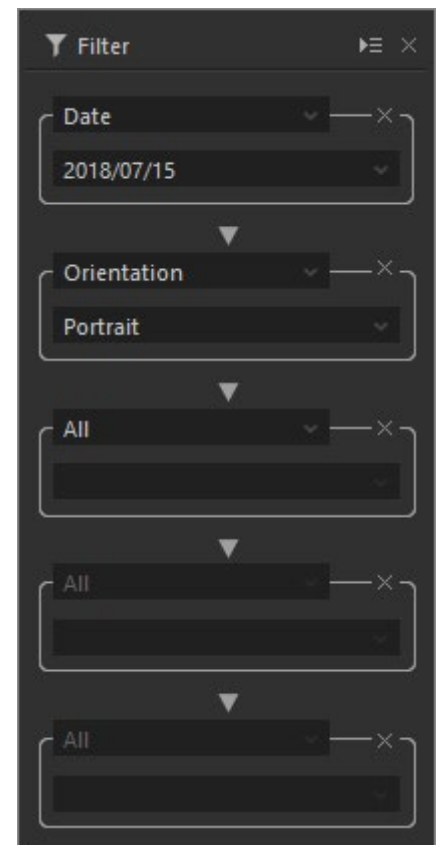
If you specify multiple search items, the display will be narrowed down so that all the conditions are met (AND search).

### 5.2.2. Filter

By selecting the list of values for the specified item, you can narrow down the images to be displayed.

The items that can be specified as filter conditions are as follows:

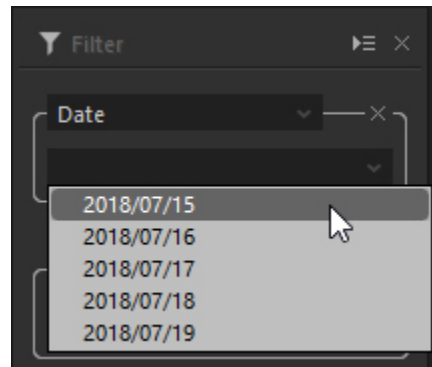
- File name
- Extension
- ISO speed
- F-Number
- Focal length
- User comment
- Date
- Camera model
- Lens
- Shutter speed
- Orientation
- User mark
- Rating



For example, when you select "Date", a list of the shooting dates of the currently displayed image will be displayed in a

drop-down list as shown below.

By selecting the shooting date you want to narrow down from the list, only the corresponding images will be narrowed down and displayed.



When multiple filter items are set, it will be a filter for the refined result of the next higher filter item.

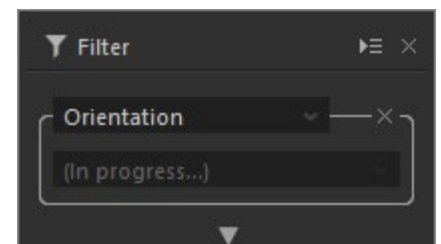
For example, if you select the date "2018/07/15" in the first filter and then select the image orientation "Portrait" in the second filter, you will see the result "Portrait image with date 2018/07/15".

If you want to delete the filter items and cancel the refined display, click × for each filter item.

Note that when you select a filter item, the message "(In progress...)" may appear and you may not be able to select the drop-down list.

Displayed immediately after opening a folder or when there are many open files and it takes time to obtain the information to be displayed.

Please wait for a while until the drop-down list is available.



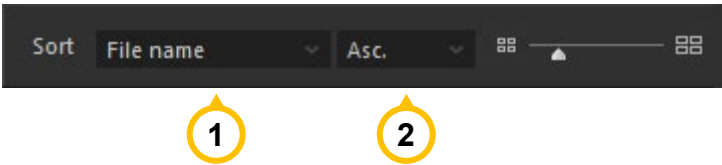


## 6. Sort the images

Sort the display order of the images displayed as thumbnails by image file information or image information. Also, by dragging the images, you can sort them in any order.

### 6.1. Sorting by image information

To sort the images, use the drop-down lists under "Sort" on the right side of the toolbar.



	Name	Overview
1	Sort items	Select the item to be used for the image display order.
2	Asc./Desc.	Select whether to sort the specified items in ascending or descending order.

The sort items that can be specified are as follows:

- |                             |                      |                         |
|-----------------------------|----------------------|-------------------------|
| ■ File name                 | [IPTC Information]   | ■ City                  |
| ■ File extension            | ■ Caption            | ■ Location              |
| ■ ISO speed                 | ■ Writer             | ■ Headline              |
| ■ F number                  | ■ Title              | ■ Job number            |
| ■ Focal length              | ■ Photographer       | ■ Subject Code          |
| ■ File updating date        | ■ Occupation         | ■ Genre                 |
| ■ Date & time               | ■ Country            | ■ Scene                 |
| ■ Camera model              | ■ Postal Code        | ■ Category              |
| ■ Lens                      | ■ State (County)     | ■ Supplemental Category |
| ■ Shutter speed             | ■ City               | ■ Keywords              |
| ■ Copy/Move mark            | ■ Address            | ■ Copyright Notice      |
| ■ Delete mark               | ■ Phone number       | ■ Terms for usage       |
| ■ User mark 1 (Blue mark)   | ■ E-mail             | ■ Provider              |
| ■ User mark 2 (Green mark)  | ■ Website URL        | ■ Instructions          |
| ■ User mark 3 (Red mark)    | ■ Date/Time Original |                         |
| ■ User mark 4 (Yellow mark) | ■ Country            |                         |
| ■ User mark 5 (Purple mark) | ■ Country Code       |                         |
| ■ Rating                    | ■ Region             |                         |

The sort item settings are saved when you exit Photo ExpressViewer, so the next time you start up, the sort will be done with the previous settings.

The sort items cannot be switched while the preview is displayed.

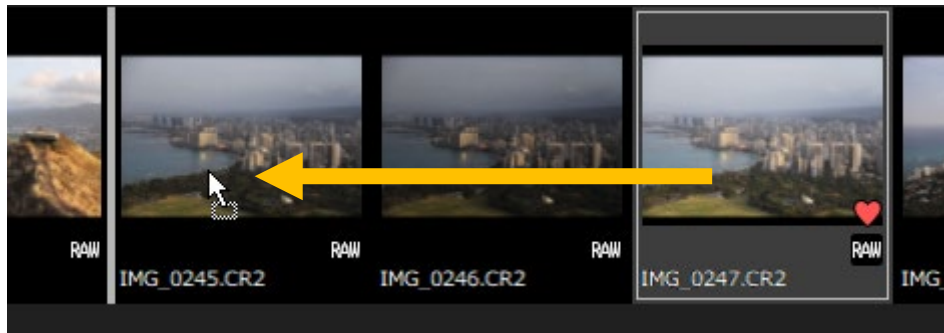
Immediately after opening a folder, or if there are many open files, a progress dialog will be displayed when you switch

the sort items, and it may take some time to sort.

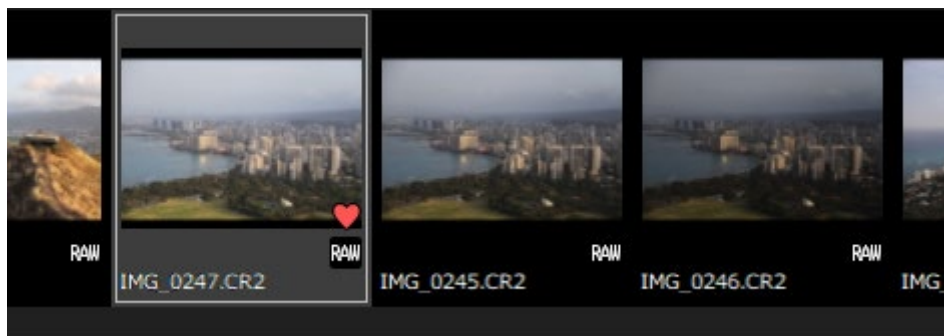
## 6.2. Sorting by dragging

By dragging the image on the thumbnail, you can sort them in any order.

When you drag an image, a vertical line appears between the thumbnails.

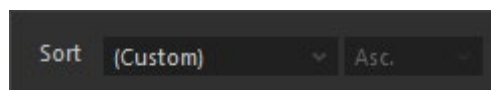


When you release the mouse at the place you want to move, the dragged image moves to the part where the vertical line is displayed.



When you drag to sort, "(Custom)" will be displayed in the drop-down list of sorted items on the toolbar.

If you toggle the dropdown and select another item, the drag sorting order is discarded.



Also, please note that when you switch open folders or close Photo ExpressViewer, the sort order by dragging will not be saved and will be discarded.

## 7. Organize images

---


Copy / move / delete the file of the selected image, and rename the file name according to the shooting information. Also, open the selected image in another application or export the metadata to reflect the settings such as mark and rating in the other application.

### 7.1. Copy/Move/Delete

There are the following methods for copying, moving, and deleting images:

#### ■ Copy


Use "Copy selected images" or "Copy marked images" to copy the image.

The "Copy marked images" function is available for images for which the " Copy/Move mark" has been set in advance.

After selecting each menu item, the "Select folder to copy images" dialog will appear, select the destination folder and click [OK].

#### ■ Move

Use "Move selected images" or "Move marked images" to move the image.

The "Move marked images" function is available for images for which the " Copy/Move mark" has been set in advance.

After selecting each menu item, the "Select folder to move images" dialog will appear, select the destination folder and click [OK].

You can also move the image on the thumbnail by dragging it to the folder you want to move on the folder tree.

#### ■ Delete

Use "Delete selected images" or "Delete marked images" to delete the image.

The "Delete marked images" function is available for images for which the " Delete mark" has been set in advance.

There are two types of deletion, delete to move to the recycle bin and delete completely, and the initial operation is to move to the recycle bin.

\* Files on the external hard disk or network drive will be deleted completely instead of being moved to the recycle bin. Please be careful.

If you hold down the [Shift] key and select the menu, it will be permanently deleted.

In either case, a dialog box will appear asking you to delete the file, click [Execute].

You can also press [Select files] to select the related files to be deleted.

### 7.2. Rename

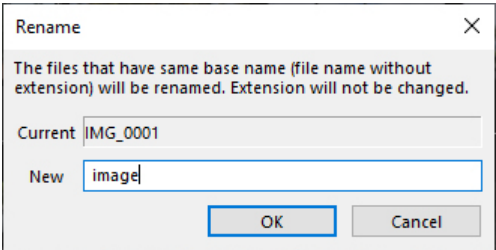
There are two ways to rename the file:

#### ■ Rename

It can be used when one image is selected.

Right-click on a thumbnail and select [Rename] from the context menu that appears.

When the "Rename" dialog appears, enter the new base file name and click [OK].



■ **Batch rename**

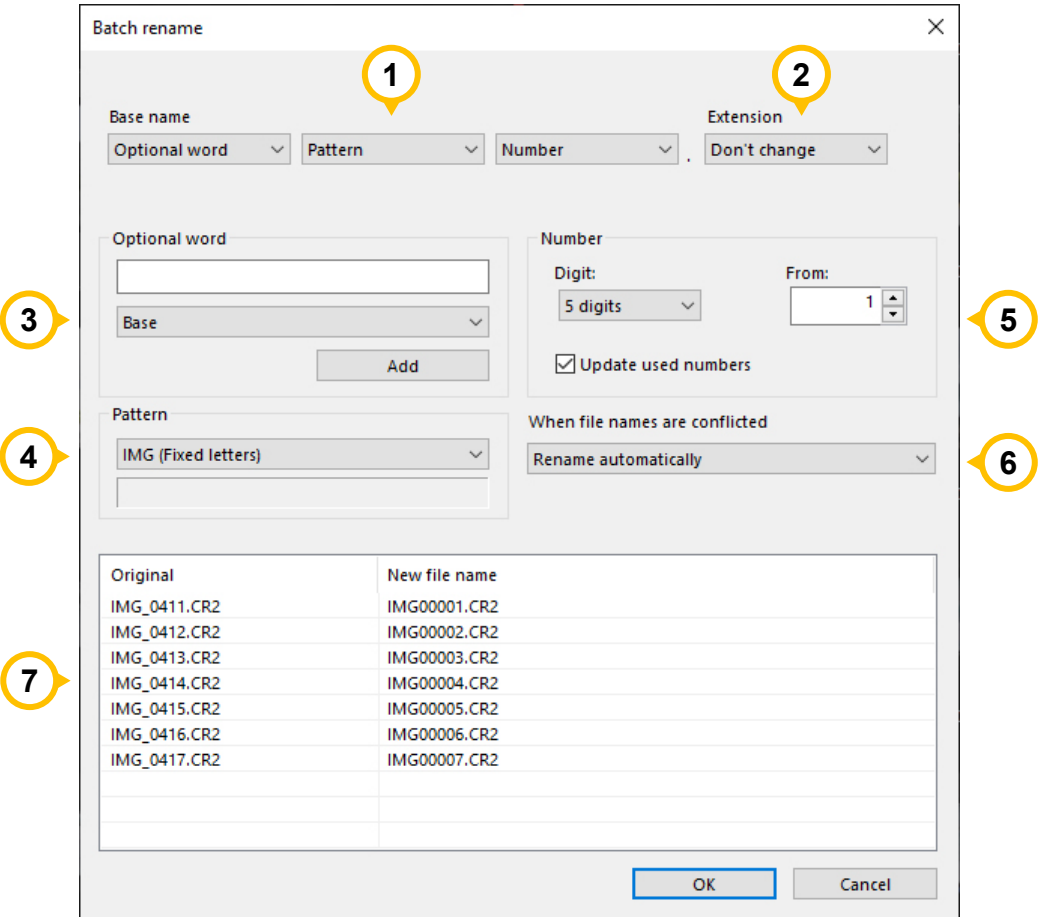
It can be used when one or more images are selected.

**7.2.1. Batch rename**

All selected images will be renamed at once according to the naming convention.

When you select multiple images and choose [File]-[Batch rename] menu, the "Batch rename" dialog will appear.

After making the following settings, click [OK] to execute the batch renaming.



	Name	Overview
1	Base name	Set the naming convention for the base name of the file in combination from the following items: <ul style="list-style-type: none"><li>■ Optional word</li><li>■ Pattern</li><li>■ Number</li></ul>
2	Extension	Set whether to change the extension to uppercase or lowercase.

3	Optional word	<p>Specify any character string.</p> <p>Specify the following items from the drop-down menu and click [Add] to insert the control characters for renaming using the image information of the image to be renamed.</p> <ul style="list-style-type: none"> <li>■ Base (%N) : "Base" means a part of filename except the extension</li> <li>■ Focal-L (%L)</li> <li>■ F-Number (%F)</li> <li>■ Shutter-S (%T) : Shutter Speed</li> <li>■ Date (%Y%M%D)</li> <li>■ Time (%h%m%s)</li> <li>■ ISO (%I)</li> </ul>
4	Pattern	Select from the prepared character strings.
5	Number	<p>Specify the number of digits in the serial number and the first number.</p> <p>If "Update used numbers" is checked, the next number after the assigned sequential number will be set as the starting number when the dialog is displayed next time.</p>
6	When file names are conflicted	If the renamed file already exists, choose whether to automatically extend the filename or check each time.
7	File name before and after renaming	The file name before renaming and the file name after renaming according to the naming convention are displayed.

### 7.3. Files to be copied / moved / deleted / renamed

Photo ExpressViewer treats multiple files with the same base name excluding the extension as the same image. For example, if IMG\_0001.RAW, IMG\_0001.JPG, IMG\_0001.TIF, and IMG\_0001.XMP exist in the same folder, the following operations will be performed according to the "Treat the same base name files as a single image" setting.

#### [Manipulate RAW files]

- **When "Treat the same base name files as a single image" is enabled**

All RAW, JPEG, TIFF and XMP files can be operated.

- **When "Treat the same base name files as a single image" is disabled**

The operation target is files excluding JPEG and TIFF files.

#### [Manipulate JPEG / TIFF files]

- **When "Treat the same base name files as a single image" is enabled** (it is assumed that the RAW file does not exist)

JPEG and TIFF files are the operation targets. XMP files cannot be operated.

- **When "Treat the same base name files as a single image" is disabled**

Only JPEG or TIFF files can be operated. XMP files cannot be operated.

Also, when editing marks and ratings with Photo Express Viewer, this information will be saved by creating an information file with the extension ".ped", such as "IMG\_0001.RAW.ped", in the "PEXV\_PARAM" subfolder.

When operating an image file, this information file is also the target of operation at the same time.

- \* If the development parameters file of our RAW development software "SILKYPIX" exists in the "SILKYPIX\_DS" subfolder, it will be subject to the same operation.

## 7.4. Export metadata

Exports metadata such as user marks and ratings set in the selected image in XMP format or SILKYPIX development parameters file.

Select a format from the [Image]-[Export metadata] menu, or from [Export metadata] on the context menu that appears when you right-click on a preview or thumbnail.

### 7.4.1. XMP format

Export metadata in XMP format.

When you open an image with software that supports reading metadata in XMP format, you can take over the information such as user mark and rating set in Photo ExpressViewer.

If the selected image is RAW, it will be saved as a file with the same name (sidecar file) with the extension ".xmp".

For JPEG / TIFF, write and save XMP format information to the original image file.

- \* When saving as a sidecar file, the original xmp file will be overwritten. Please note that the information output by other software may be lost.

The metadata to be exported is as follows:

- User mark 1-5
- Rating
- Rotation information
- IPTC information

The metadata to be shown differs depending on the software to be taken over.

Please note that there are cases where only the rating is shown or the rotation information is not shown.

For details, please contact the relevant software manufacturer.

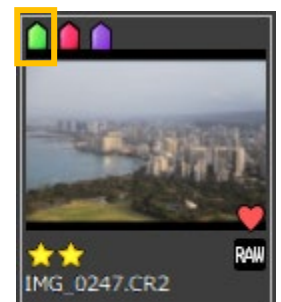
### [Export user mark]

There are restrictions on the export of user marks 1 to 5.

Only one color of user mark can be exported as a label.

Therefore, when multiple user marks are set in the selected image, the user mark displayed on the leftmost side of the thumbnail is usually given priority and output as a label.

Also, each user mark is usually exported with the following label names:



User mark	Output label name
User mark 1 (Blue mark)	Blue

User mark 2 (Green mark)	Green
User mark 3 (Red mark)	Red
User mark 4 (Yellow mark)	Yellow
User mark 5 (Purple mark)	Purple

The label is shown only when it matches the label name in the software to which the image information is exported.  
The priority of each user mark for label output and the output label name can be changed in "[Metadata export settings](#)".

#### 7.4.2. SILKYPIX development parameters file

Export in the development parameters file of our RAW development software "SILKYPIX".

When you open an image on SILKYPIX, you can inherit the information such as user mark and rating set in Photo ExpressViewer.

The SILKYPIX development parameters file creates a subfolder called "SILKYPIX\_DS" and saves it in this folder.  
Initially, the file will be exported as a development parameters file in "SILKYPIX version 10 format".

If your SILKYPIX version is between 6 and 9, specify the version in "[Metadata export settings](#)".

- \* You cannot export in the format of SILKYPIX version 5 or earlier. Also, the SILKYPIX series (bundle version) included with the camera and lens is not applicable.
- \* If the development parameters file of the image to be exported already exists, it will be overwritten and saved. Please note that the development parameters adjusted by SILKYPIX will be lost.

The metadata to be exported is as follows:

- User mark 1-5
- Rating
- Rotation information
- IPTC information

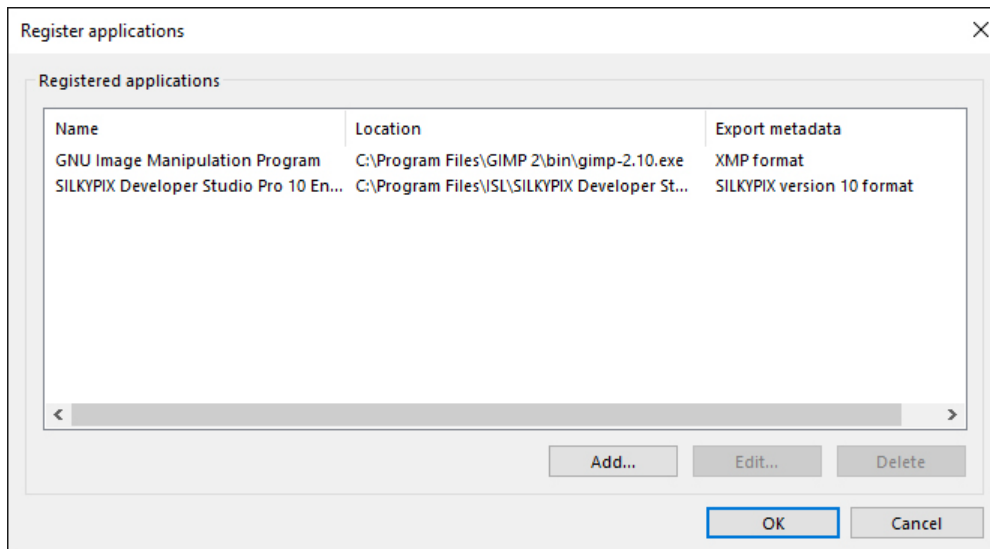
#### [Export user mark]

If you select SILKYPIX Version 8 format or earlier, User mark 4 (yellow mark) and User mark 5 (purple mark) will not be exported.

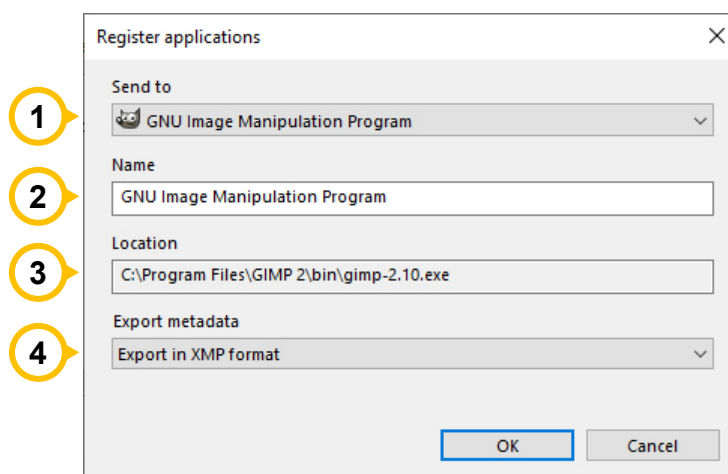
#### 7.5. Open with another application

Open the file of the selected image with the application for which the application has been registered in advance.  
You can also export the metadata of the selected image at the same time.

Select [File]-[Open with another application]-[Register applications] menu to open the "Register applications" dialog.



Click the "Add" button to register your application.



	Name	Overview
1	Send to	Select an application from the list. If you don't see the application in the list, select "Other..." to specify the application (.exe file) directly.
2	Name	Set the name of the application.
3	Location	The path name of the selected application is displayed.
4	Export metadata	You can select whether to export the metadata of the selected image when the application starts. When exporting, select the export format. * When the SILKYPIX development parameters file is selected, this setting will take precedence over the version of the export format set in the "Metadata export settings".

The registered applications will be added to the [File]-[Open with another application] menu and the [Open with another application] menu on the context menu that appears when you right-click on a preview or thumbnail.



By selecting an application from the menu, the file of the selected image will be opened in the specified application.

**[Restrictions on starting SILKYPIX]**

Photo ExpressViewer and our RAW development software "SILKYPIX" series cannot be started at the same time.

When registering and starting the SILKYPIX series with this function, SILKYPIX will be started after Photo ExpressViewer is closed.

## 8. Other useful functions

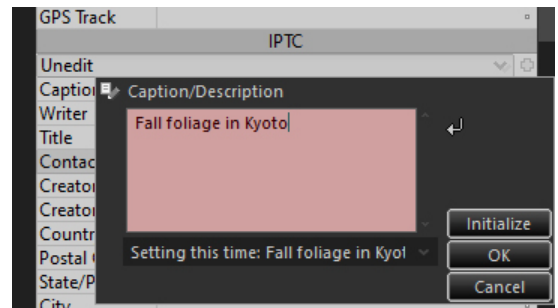
### 8.1. IPTC Information taste

Register the IPTC information set in the image properties as a preset and apply it to other images.

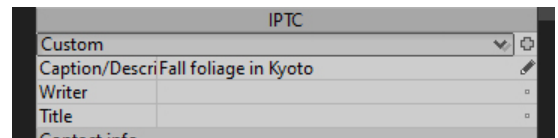
In Photo ExpressViewer, presets are called "taste".

Double-click the item you want to edit in the IPTC information to display the edit screen.

Enter the contents of the item and click [OK].

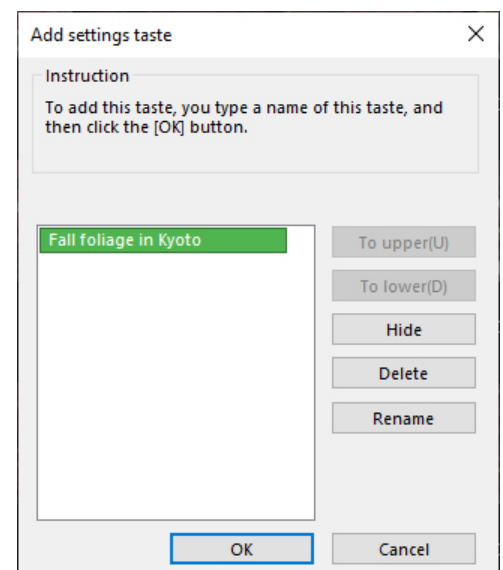


When the item is entered, the drop-down under the item name in [IPTC] will change to show "Custom".



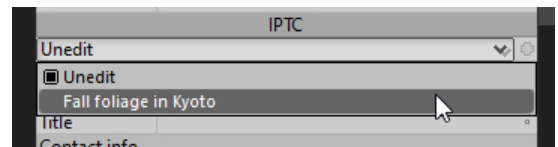
Click the "+" icon on the right to display the "Add settings taste" dialog.

Enter the taste name to be registered and press [OK] to display the registered taste in the drop-down list of IPTC information.



Move to another image, select the registered taste from the drop-down list, and apply the IPTC information at the time of registration.

It is also possible to select multiple images and apply the same IPTC information at once.



The registered taste can be renamed or deleted in the dialog opened by selecting [Settings]-[Edit IPTC information tastes] menu.

\* Ratings are also subject to taste registration as IPTC information. Please be careful when registering and applying tastes.

## 8.2. Register / Restore window positions

Register the placement of the main window and each control, and restore by selecting the placement data.

### [Register window positions]

Select [Settings]-[Register window positions] menu in the window layout you want to register.

The "Register window positions" dialog will appear, and the date and time will be registered in the list.

### [Restore window positions]

Select the [Settings]-[Restore window positions] menu.



The "Restore window positions" dialog will appear. Select the items you want to restore and click [OK].

When the "Preview" is checked, you can select an item in the list to reproduce the registered window layout.

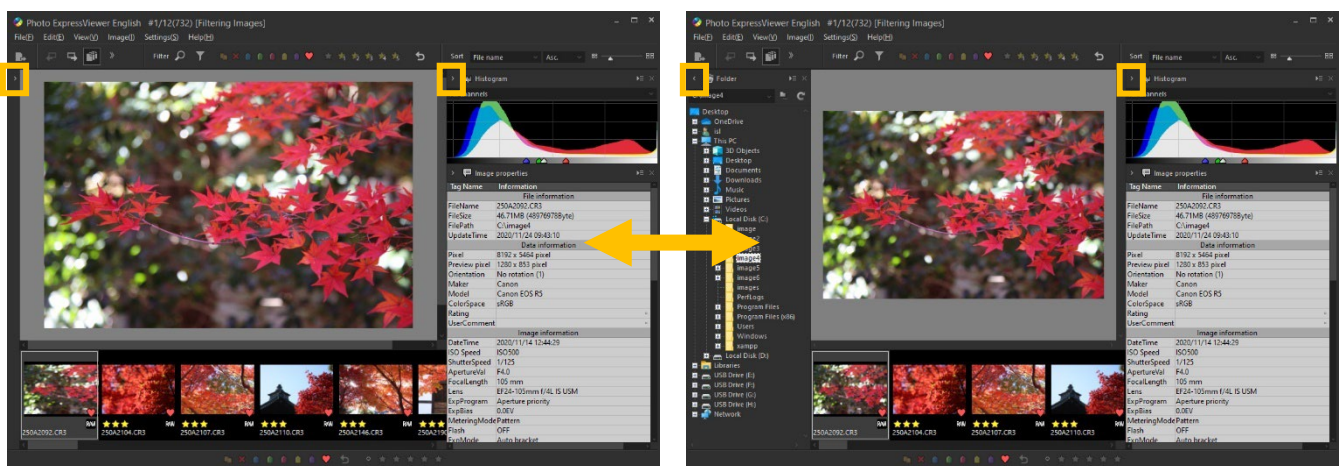
## 8.3. Reset the window layout to the initial state

Select [Settings]-[Initialize window positions and display states] from the menu if you want to return the layout of the controls to the initial state, for example, if you have unintentionally deleted a control.

## 8.4. Collapse / Expand controls

By clicking the  or  icon at the top of the control, you can show / hide the controls placed on the left and right sides of the main window.

In an environment where the screen area is small, you can use the screen effectively by temporarily expanding the preview and thumbnails.

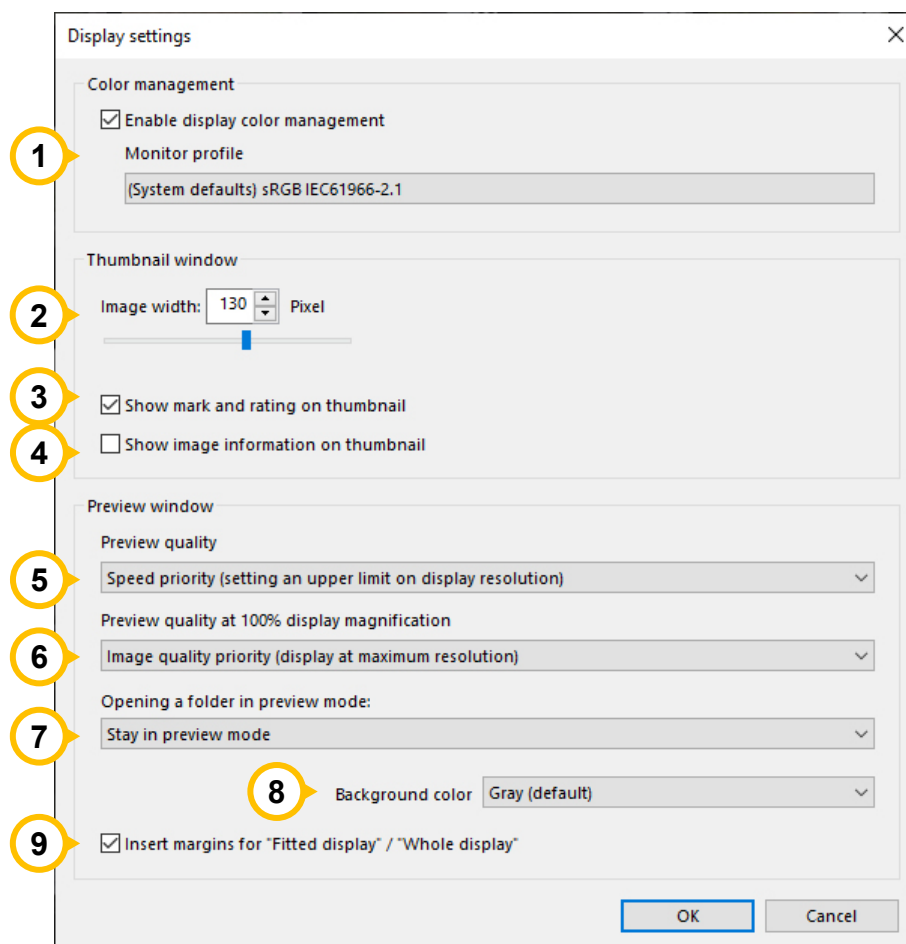


## 9. Settings

Make various settings for Photo ExpressViewer.

### 9.1. Display settings

Make settings related to preview display and thumbnail display.

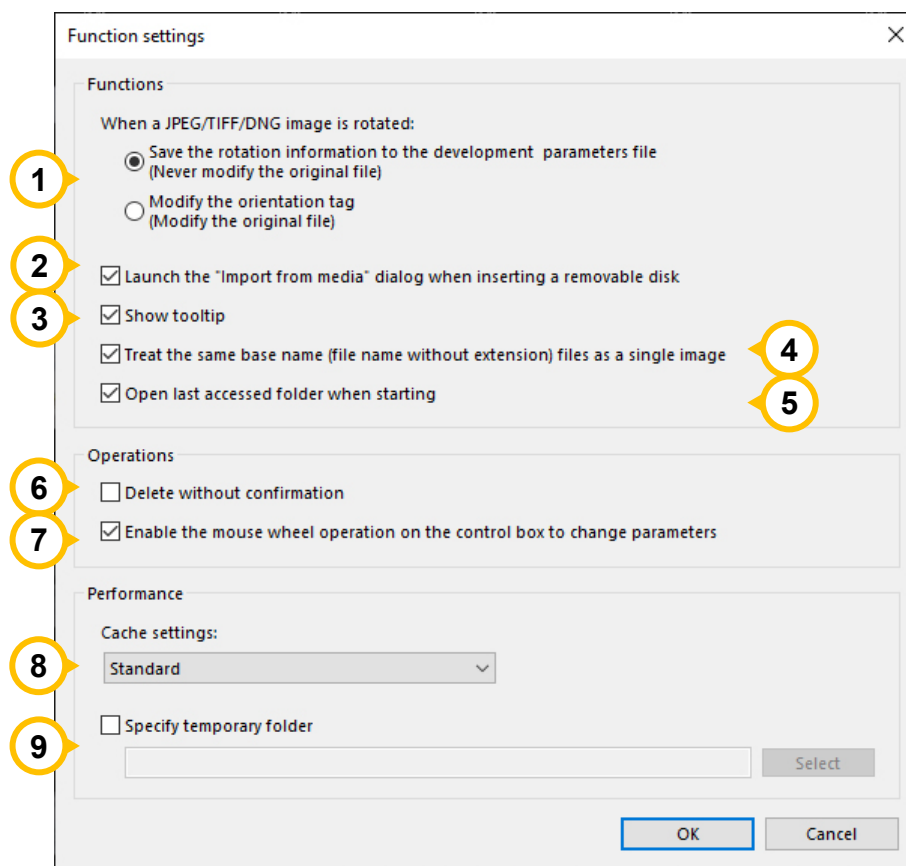


	Name	Overview
1	Color management	Set whether to perform color management of previews and thumbnails with the selected monitor profile. The drop-down list shows the monitor profiles registered in the OS.
2	Image width	Specify the width of the thumbnail image in pixels.
3	Show mark and rating on thumbnail	Set whether to display the mark and rating on the thumbnail.
4	Show image information on thumbnail	Set whether to display the image information on the thumbnail. If unchecked, only the file name is displayed.
5	Preview quality	Set the quality (pixel size) of the image displayed in the preview. <ul style="list-style-type: none"><li>■ Image quality priority (display at maximum resolution)</li></ul> The preview images of JPEG / TIFF and RAW data are loaded and

		<p>displayed in the original pixel size.</p> <ul style="list-style-type: none"> <li>■ Speed priority (setting an upper limit on display resolution) The preview images of JPEG / TIFF and RAW data are loaded and displayed with a maximum width limit of 1280 pixels.</li> </ul> <p>The initial value is set to "Speed priority". When "Image quality priority" is selected, a clear image can be displayed in an environment with a high monitor resolution, but the image loading speed will be reduced.</p>
6	Preview quality at 100% display magnification	<p>Set the image quality (pixel size) when the preview is displayed at 100% size.</p> <ul style="list-style-type: none"> <li>■ Image quality priority (display at maximum resolution) The preview images of JPEG / TIFF and RAW data are loaded and displayed in the original pixel size.</li> <li>■ Speed priority (setting an upper limit on display resolution) The preview images of JPEG / TIFF and RAW data are loaded and displayed with a maximum width limit of 1280 pixels.</li> </ul> <p>The initial value is set to "Image quality priority". If your PC does not have very high specifications, selecting "Speed priority" will lighten the operation when displaying 100%.</p>
7	Opening a folder in preview mode	Set the operation when the folder is opened in the preview mode.
8	Background color	Select the background color for the preview display.
9	Insert margins for "Fitted display" / "Whole display"	Set whether to provide a margin around the preview display during fit display or whole display.

## 9.2. Function settings

Make settings related to the functions and operations of Photo ExpressViewer in general.



	Name	Overview
1	When a JPEG/TIFF/DNG image is rotated	Select whether to rewrite the rotation information of the original image file when JPEG / TIFF / DNG is rotated 90 degrees.
2	Launch the "Import from media" dialog when inserting a removable disk	Set whether to display the "Import from media" dialog when inserting media such as an SD card while Photo Express Viewer is running.
3	Show tooltip	Set whether to display a tooltip when the mouse cursor is placed on an icon or button.
4	Treat the same base name (file name without extension) files as a single image	Switches whether to handle files with the same name with different extensions as a group. Turn it off if you want to display JPEG and RAW with the same name side by side.
5	Open last accessed folder when starting	When you start Photo ExpressViewer, open the previously opened folder.
6	Delete without confirmation	Set whether to display the confirmation dialog when deleting a file.

7	Enable the mouse wheel operation on the control box to change parameters	Set whether to change when the mouse wheel is operated with the slider or drop-down list on the control.
8	Cache settings	Set the amount of cache data created in memory. The performance may be improved by specifying "Restrictions" if the installed memory is small, or "Maximum" if the installed memory or temporary folder has enough free space.
9	Specify temporary folder	You can specify the folder to store the temporary files created by Photo ExpressViewer. The initial value is created in the OS standard temporary folder. * It will be valid the next time you start Photo ExpressViewer.

### 9.3. Shortcut keys settings

Set shortcut keys for the functions installed in Photo Express Viewer.

Shortcut keys settings

You can assign a shortcut key to a Photo ExpressViewer function by using the software keyboard.

Function category:

All functions

Function	Current shortcut key(s)	New shortcut key(s)
Open file	Ctrl+O	Ctrl+O
Close		
Close selected images		
Import from media		
Delete marked images (Move to Trash)		
Delete marked images (Remove permanently)		
Copy marked images		
Move marked images		
Delete selected images (Move to Trash)	Delete	Delete
Delete selected images (Remove permanently)	Shift+Delete	Shift+Delete
Copy selected images		
Move selected images		

Single key   Ctrl +   Shift +   Ctrl + Shift +

Available   Assigned   Update   Reserved   Not available

Initialize   OK   Cancel

	Name	Overview
1	Function category	Select the target of the function to be displayed in the list.
2	List	Displays the functions to which shortcut keys can be assigned, the currently set key, and the changed key. You can unlock an already assigned key by right-clicking on an item in the list. * The key set as the reservation key cannot be canceled or changed.

3	Software keyboard	Displays the status of the set keys. You can also assign a key to a function selected in the list by pressing a key button.
4	Initialize	Reset the key assignment to the default state of Photo ExpressViewer.

## 9.4. Metadata export settings

Make settings related to exporting metadata.

Metadata export settings

XMP

☒ Output rotation information

☒ Output user marks as label

	Output label name	Priority
User mark 1 (Blue mark)	Blue	1
User mark 2 (Green mark)	Green	2
User mark 3 (Red mark)	Red	3
User mark 4 (Yellow mark)	Yellow	4
User mark 5 (Purple mark)	Purple	5

If multiple user marks are set for an image, only the one color with the highest priority will be output as a label.

SILKYPIX development parameters file

Output formats

SILKYPIX version 10 format

Operations

☒ Display a confirmation message when exporting

☒ If file exists, ask for confirmation to overwrite

OK Cancel

	Name	Overview
1	Output rotation information	Set whether to include rotation information when exporting in XMP format.
2	Output user marks as label	Set whether to output label information when exporting in XMP format. When outputting, set the output label name and priority for each user mark.
3	Output formats	Set the corresponding SILKYPIX version when exporting in SILKYPIX development parameters file.
4	Display a confirmation message when exporting	When exporting metadata, check whether to export it.
5	If file exists, ask for confirmation to overwrite	If the output target file already exists, check whether to overwrite it.



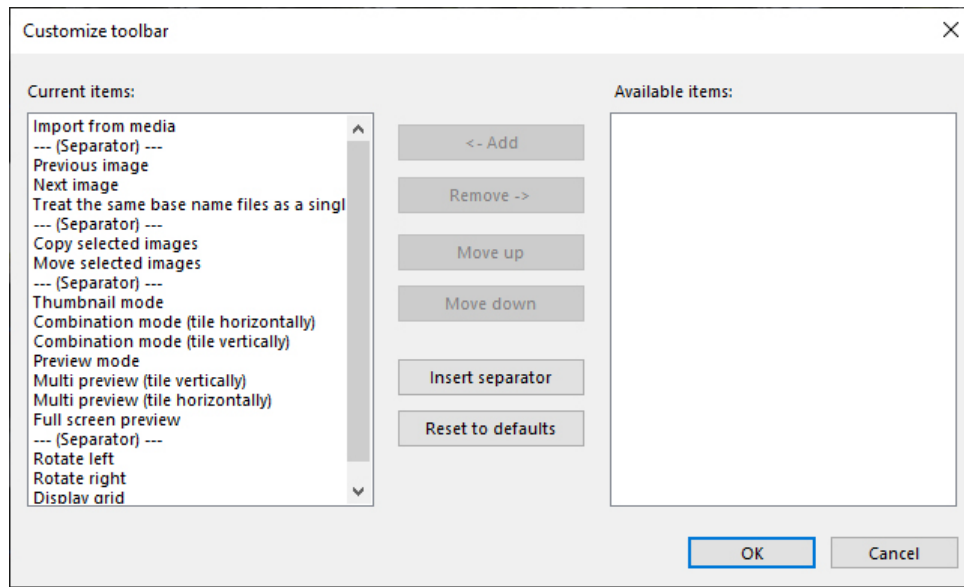
## 9.5. Customize toolbar

Change the order of the icons on the left side of the toolbar and the icons to be displayed.

If you change the settings in the "Customize toolbar" dialog, the order of the icons will change in real time.

You can make settings while checking the display status.

Note that the items on the right side of the toolbar, such as "Filter" and "Sort", are always visible and cannot be changed.

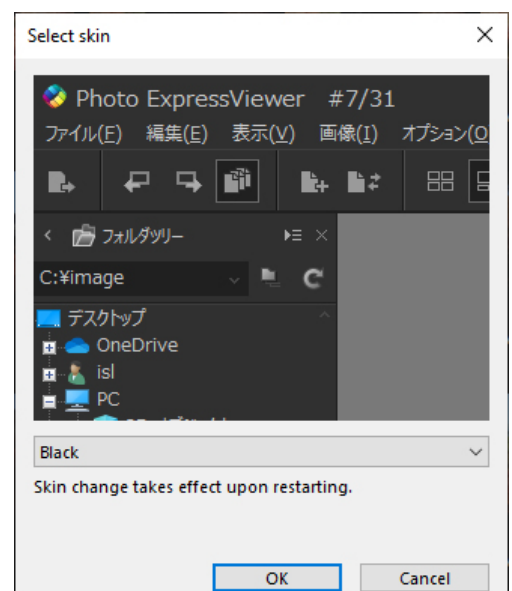


## 9.6. Select skin

Change the size of icons and characters and the color of controls.

If you are using a high-resolution monitor such as a 4k monitor, you can select the "For high-resolution monitor" skin to display icons and text at the optimal size.

After changing the settings in the "Select skin" dialog, restart Photo ExpressViewer to apply the settings.



## 10. User support

---

### 10.1. Inquiries about merchandise

Please make any inquiries you have concerning questions such as how to use "Photo ExpressViewer".

In addition, we cannot answer inquiries that are not directly related to our products, such as how to handle PCs, how to handle OSs, digital cameras, and how to operate software of other companies. For inquiries about other companies' products, please contact the support desk of each company.

Furthermore, there are cases in which we cannot offer support if your problem stems from a malfunction on a device other than one for which our company offers a guarantee.

#### 10.1.1. How to make inquiries

##### ■ Inquire over the Internet

Use the special support form on our company's web page.

Use the [support form](#) from our support site.

\* When using the support form, you must enter your registered license serial number, so please have it ready.

##### ■ Inquiries by e-mail

Please follow the [Instructions for Making Inquiries] below and send an e-mail to the our support center.

E-mail address: [support@isl.co.jp](mailto:support@isl.co.jp)

#### [Instructions for Making Inquiries]

Please include the following items when making an inquiry.

1. Your name
2. An e-mail address for replies

When inquiring by e-mail, you may use either your PC or cell phone e-mail address.

However, please understand that when using a free e-mail site or cell phone e-mail, replies from our company may not be received due to limitations to word count, etc.

3. Product name: Photo ExpressViewer
4. Product serial number
5. Photo ExpressViewer version (example: Ver. 1.0.2.0)
6. OS

If you are user of Windows 10, please describe the Version and OS Build number.

(Example: Windows 10 Version20H2, OS Build19042.685)

7. PC (manufacturer and model)
8. Processor model number
9. Processor speed (GHz)
10. Memory (GB)
11. Drive type (example: HDD / SSD)
12. Available capacity on drive (GB)
13. Digital camera (manufacturer and model)

#### 14. Your inquiry

##### **10.1.2. How to check serial number**

Please include your serial number when making inquiries.

To check your serial number, select [Help]-[Version information] and check the dialog that appears.

## 11. License Agreement

---

### [Important]

Read this license agreement carefully.

This license agreement ("Agreement") is a legal agreement between you (either an individual or a single entity) and Ichikawa Soft Laboratory ("ISL") for software products ("Product" or "Software") of Ichikawa Soft Laboratory.

Opening any packaging or physical media, installation, receiving any serialization codes or any use of this Product indicates your express understanding and acceptance of the terms in this Agreement.

ISL expressly prohibits you from installation or use of this Product if you do not agree to all terms of this Agreement.

ISL reserves any and all rights not specifically granted in this Agreement.

ISL expressly prohibits you from installation or use of this Product if you do not agree to all terms of this Agreement.

ISL reserves any and all rights not specifically granted in this Agreement.

You are permitted to use, and not sell, the product.

You expressly acknowledge that your rights are limited to use, and that you are expressly forbidden to rent, sell or resell the product or transfer your use rights.

### [Software Product License]

Product name: Photo ExpressViewer English

#### 1. Definitions

- (1) This Product includes the computer software, associated media, materials (documentations such as manuals), and "online" or electronic documentation.
- (2) This software has functions that are available after paying for a license.

#### 2. Condition of Use

- (1) This agreement grants you the right to use the software based on agreeing to the users agreement.
- (2) Your rights to use this product are contingent upon your licensing the product from ISL or authorized ISL partner.  
A license can be used on a maximum of two (2) computers owned by you.  
You are authorized to create a number of backup copies of the product only up to the number of licenses authorized under this agreement.
- (3) Only after any required payment and being a customer in good standing will ISL issue you a serial number and product key (or other form of activation) to enable this software. You expressly acknowledge that you understand you will only be able to use this software after registering using activation procedures. Please refer to SILKYPIX web site (<https://support.isl.co.jp/en/license/>) for licensing procedures and other information.
- (4) You are allowed to experience all or part of the software functions without a payment for a period of time that ISL defines. However, you will not be able to use this software after the period defined by ISL has passed.

#### 3. Communication through the Internet

If the computer on which this software is installed is connected to the Internet, there are cases in which communications may occur with our company through the Internet in order to provide information on updating

software versions or improving our company's merchandise.

When customers install this software they agree that our company may collect, save and use information concerning this software, as well as information concerning the computer system on which this software is installed.

However, information gathered from your computer is not information that would identify you personally, but rather information used only for the purpose of providing information on merchandise and services beneficial to you, as well as to improve our company's products.

#### 4. Prohibited Matters

##### (1) Copyright notice

You shall not remove any copyright notice attached to all copies of this Product.

##### (2) Do not distribute or redistribute Product Keys

You shall not distribute the Product Key of this Product to any third party.

##### (3) Do Not Use Unauthorized Product Keys

You will not use a Product Key from any third party other than those provided by authorized distributors or partners of ISL.

##### (4) Do not distribute any portion of the Product

You shall not distribute any portion of the Product.

##### (5) Do Not Alter Product

You shall not alter all or any portion of the Product.

##### (6) Do not rent, lease, or sub-license the Product

You shall not rent, lease or sub-license the Product, a copy or alteration of the Product, or the Product key, to any third party.

##### (7) Do not reverse engineer, decompile, or disassemble the Product

You shall not reverse engineer, decompile, or disassemble the Product.

##### (8) Compliance with law

You shall comply with the applicable, governing laws when using the Product.

#### 5. The Validity term of this agreement

(1) This Agreement is effective from the date of the agreement until you discontinue using the Product or terminated.

(2) Any rights granted under this Agreement are automatically terminated if you violate any portion of this Agreement. At its sole discretion, ISL may waive automatic termination. In the event your rights are terminated, you must destroy all copies of the product and product components. In the event your rights to use the product are terminated, you expressly agree and warrant that any applicable penalties or requirements, without limitation, are in full force under this Agreement.

#### 6. Responsibilities of ISL

ISL provides limited technical and customer service support only for customers who are parties to this Agreement; technical support is not provided during any trial period.

You can use the Support Services in accordance with ISL's policy and program as written in the user's manual, online documentations or printed materials provided by ISL.

The additional software codes are regarded as a part of the Product, and the terms and conditions of this Agreement

are applied.

The technical information of the customers provided to ISL as part of the support service may be used by ISL for commercial purposes, including product support or development. However, ISL shall not use them in a way in which the customer can be identified.

#### 7. Limitation of Liability

- (1) ISL is not liable for any damages arising out of selection, introduction, usage and results of using this product. You assume the entire risk.
- (2) In no event will ISL or its suppliers be liable for any damages (including but not limited to the damages for lost of revenue, business interruption, loss of business information, and other pecuniary loss) arising out of the use or inability to use the Product and its documentation even if ISL has been advised of the possibility of such damages.

#### 8. Copyright

All titles and copyrights in this Product and in any copies of this Product are owned by ISL. All titles and rights of intangible properties in the contents accessed by the Product are owned by its owner, and protected by the applied copyright laws and the terms of the copyright agreement. This Agreement does not provide any license agreement of these contents owned by third party. The rights not given explicitly in this Agreement are reserved by ISL.

#### 9. Export Regulation

You shall not directly or indirectly export all or a portion of the licensed software without obtaining the necessary permission from the Government of Japan or the governments of the relevant countries.

#### 10. Third Party Software

ISL may provide to you third party products ("Third Party Product") in addition to the Product; Any third party product is governed exclusively by its own End User License Agreement and terms and not this Agreement, including, but exclusive to, support and warranty.

##### (1) Support services

Third Party Product(s) documentation and components are provided as is without support from ISL.

##### (2) No warranty

Third Party Product(s) documentation and components are provided as is without any warranty, including merchantability, fitness for a particular purpose and non-infringement, regardless of whether it is oral or written information. The entire risk as to the results and performance of the Third Party Product is assumed by you.

##### (3) Exclusion of Liability

In no event will ISL be liable for any damages (including but not limited to the damages for lost revenue, business interruption, loss of business information, and other pecuniary loss) arising out of the use or inability to use the Third Party Product and its documentations, even if ISL has been advised of the possibility of such damages.

#### 11. General

- (1) The invalidity or unenforceability of any provisions of this Agreement shall not affect the validity or enforceability of any other provision of this Agreement, which shall remain in full force and effect.

(2) This Agreement shall be governed by laws of Japan. Any dispute arising out of or related to this Agreement shall be submitted to the jurisdiction of the Tokyo District Court in Tokyo, Japan.

Ichikawa Soft Laboratory Co., Ltd., Stage Bldg. 13F, 2-7-2, Fujimi, Chiyoda-ku, Tokyo 102-0071 Japan